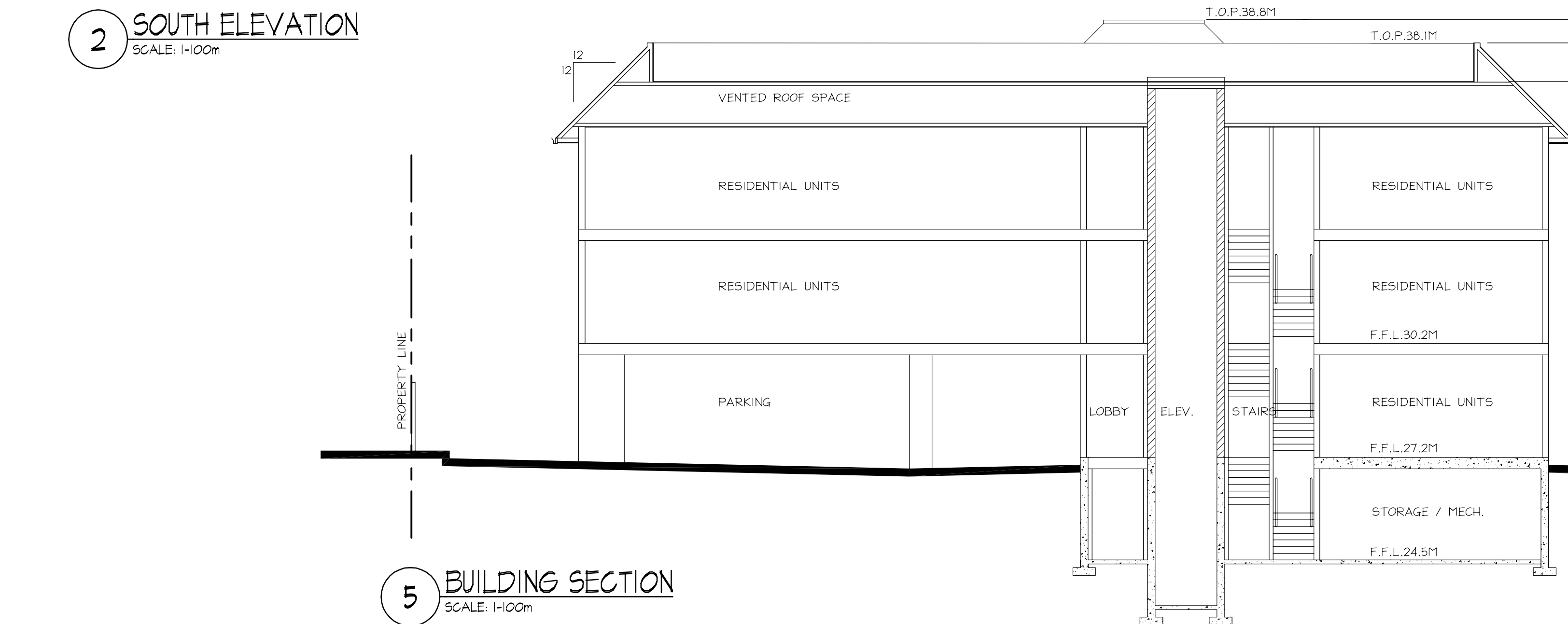




3 WEST ELEVATION - RICHMOND AVE.
SCALE: 1:100m



2 SOUTH ELEVATION
SCALE: 1:100m



5 BUILDING SECTION
SCALE: 1:100m



4 REAR ELEVATION (NORTH)
SCALE: 1:100m



1 WEST ELEVATION
SCALE: 1:100m



No.	Date	Issue	Revision	Date	No.

Copyright Reserved. This drawing remains the exclusive property of the architect and may not be revised or reproduced without their written consent.

Project
Richmond and Oak Bay Ave. Residential

Drawing
ELEVATIONS & SECTION
DRAWING_NAME

Scale: 1:100m Date: Nov. 2008 Drawn: db

Job No. 2008-26

Drwg. No. Rev.

A2.4

vda
Vic Davies Architect (2005) Ltd.
1561 Church Avenue, Victoria, B.C.
Canada, V8P 5H2
Tel: (250) 477-4255 Fax: (250) 477-8411
Email: mail@vda.ca Website: www.vicdavies.com